

Historic, archived document

Do not assume content reflects current scientific knowledge, policies, or practices.

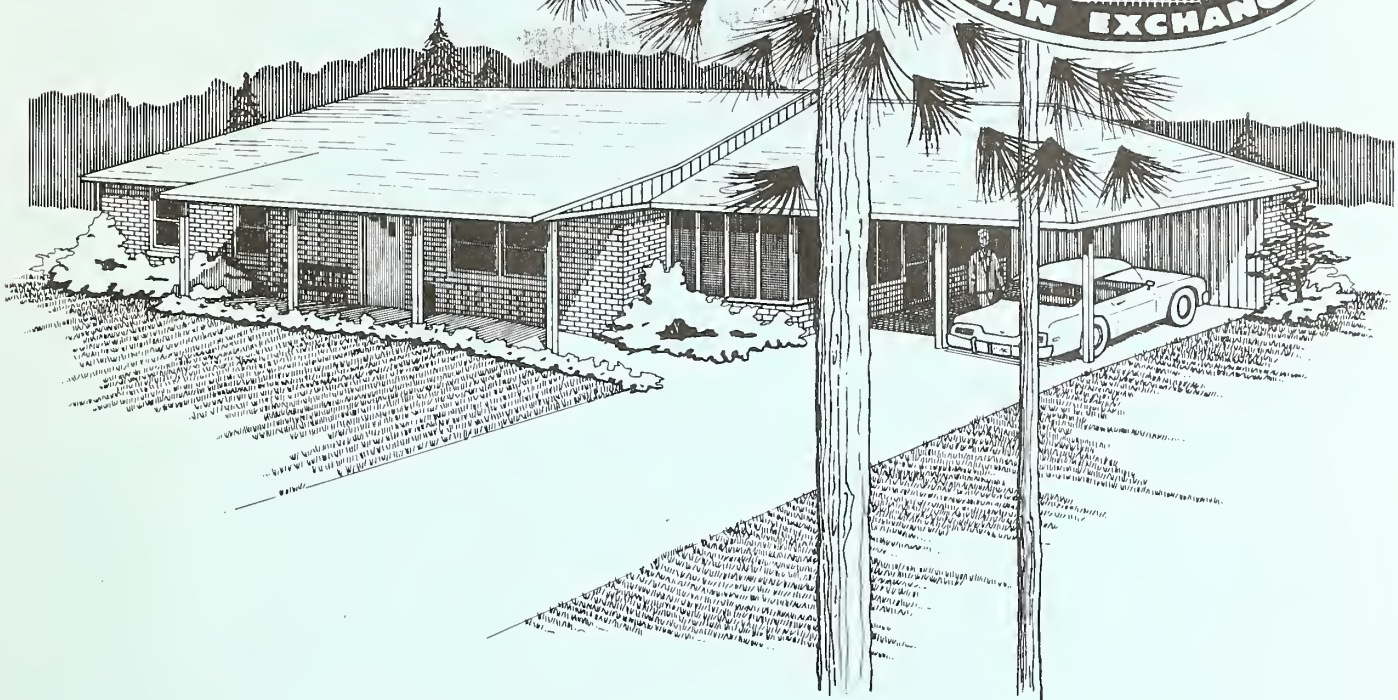
1
Ag 84M
Cop. 4

THREE-BEDROOM HOUSE FOR THE HANDICAPPED

U.S. DEPT. OF AGRICULTURE
NATIONAL AGRICULTURAL MECHANICAL SERVICE

JUL 24 1979

COOPERATIVE
FARM BUILDING
Plan No. 7216
(4 sheets)
PLAN EXCHANGE



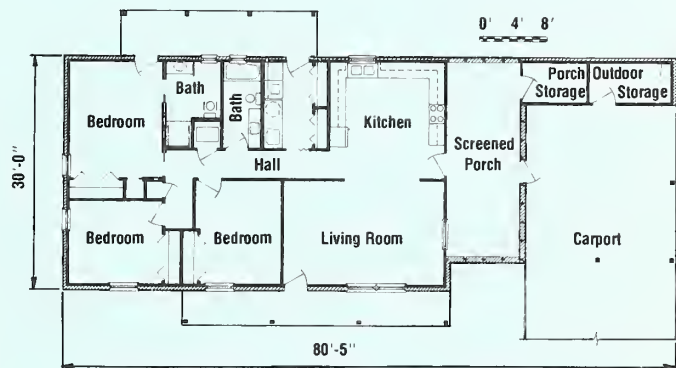
THREE-BEDROOM HOUSE FOR THE HANDICAPPED

This comfortable home is designed to provide all the modern facilities necessary for a handicapped person plus a family of four to six persons. It has three bedrooms, two baths, work room, large open eat-in kitchen, spacious living area, screened porch, sheltered carport for two cars, and plenty of indoor-outdoor storage space.

The rooms are all on one floor, making the house ideal for a level building site. Most of the circulation barriers usually found in conventional homes are removed, thus eliminating constraints normally affecting a person in a wheelchair. There are no steps or other raised surfaces at either the front or carport entrance, and all doors are designed slightly wider than usual to permit easy wheelchair passage.

The house is adaptable to both warm and cold climates; however, in colder areas where deeper foundations may be required because of frost, local building authorities should be consulted.

Adjoining the master bedroom is a bath incorporating many features especially designed for the handicapped.



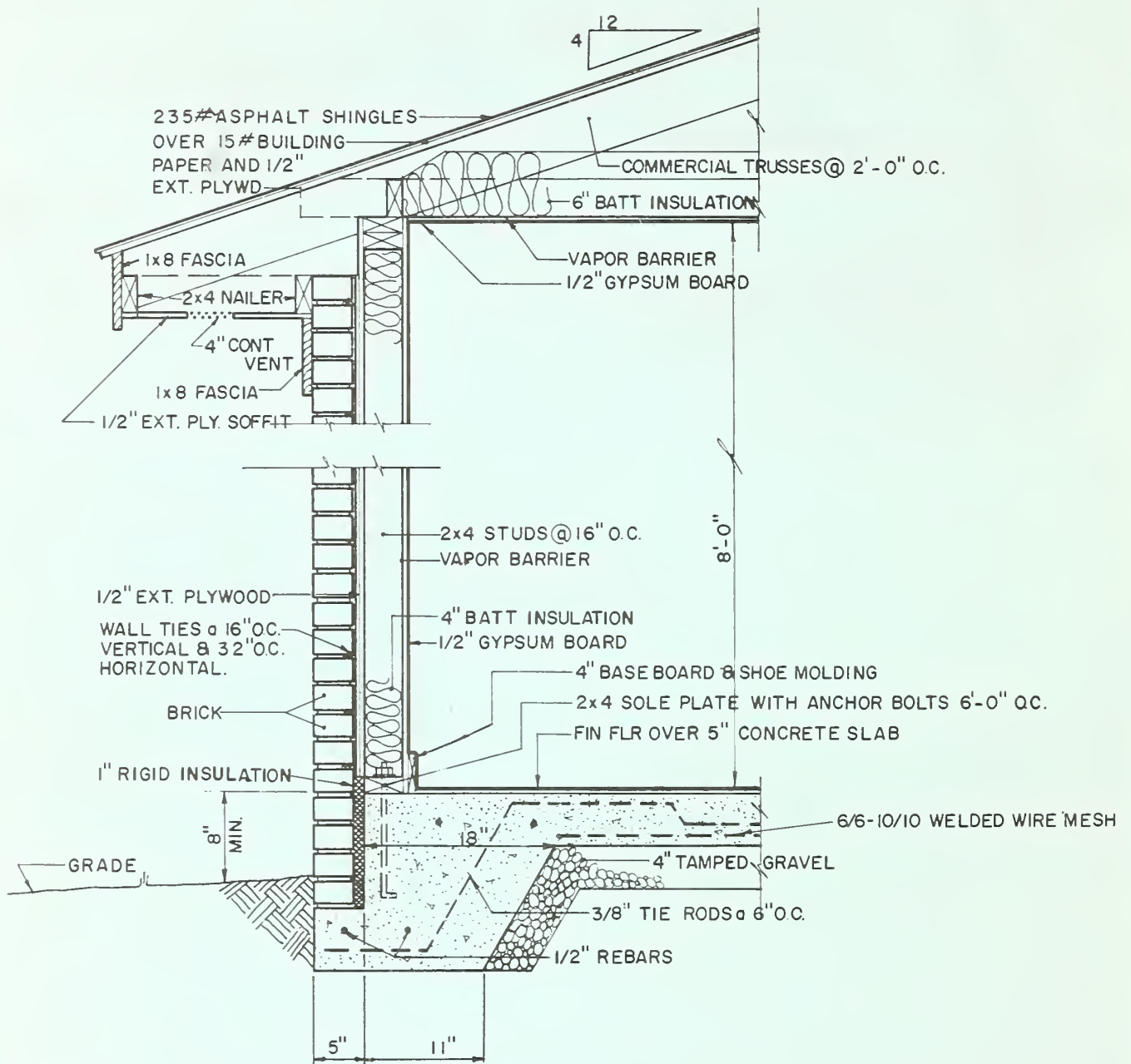
Other restrictions can be eased by lowering light switches, raising wall plugs, providing easily reached operable windows, and lowering closet hanging rods. Despite these special features that are desirable for the handicapped, the house is otherwise conventional.

Complete working drawings may be obtained from the Extension agricultural engineer at your State land-grant university. There may be a small charge to cover cost of printing.

If you do not know the location of your State land-grant university, send your request to Agricultural Engineer, Science and Education Administration, U.S. Department of Agriculture, Washington, D.C. 20250. Your request will be forwarded to the correct university.

ORDER PLAN NO. 7216, THREE-BEDROOM HOUSE FOR THE HANDICAPPED.

Issued June 1979



TYPICAL WALL SECTION

1911
151

1911
151

1911
151

